

[NATURAL BEAUTY *of* THE SKIN AND HAIR]

PAMYROL

The secret of beautiful hair lies in a clean and healthy scalp



“Pamyrol’s approach, cultivated by centuries of Japanese tradition, is supported by professional stylists and beauticians.”

BREAKING THE MOLD OF ORDINARY BEAUTY PRODUCTS

Professional craftsmanship has always been emphasized in Japanese culture. At Pamyrol, we take pride in the fact that our products are popular among stylists and beauticians.

Your metabolism works to renew each of the sixty trillion cells in your body. It accelerates when your skin—sometimes called your ‘third brain’—relaxes due to pleasant stimuli. Our products provide just the stimulus your skin needs for this process. Call it your body’s natural inclination toward beauty. Pamyrol breaks the mold of ordinary beauty products by generating this natural beautifying power, and this factor is what makes our products truly worth your while.

Pamyrol’s approach, cultivated by centuries of Japanese tradition, is supported by professional stylists and beauticians—experts who really know about hair and skin care—and all of our products are developed in consultation with them. In Japan, we rely exclusively on referrals to customers from professionals in the industry rather than advertising, helping us to become a trusted and well-loved brand.

We hope you will join our customers in experiencing the indulgence of Pamyrol products.

RESEARCH BASED ON THE DESIRE TO HELP PEOPLE

While the founder of Pamyrol was a pharmacology student at university in Japan after the war, he saw many people suffering from skin problems and decided he wanted to do something to help them.

In 1967, he founded a brand new pharmaceutical company. After much experimentation in the lab, he succeeded in creating his first product, which he marketed under the name of Pamyrol, a brand dedicated to products that engage the innate power of the human body.

Counting the years spent on research, we have focused on the skin of the scalp for over fifty years, refusing to compromise on anything less than the best.

Over the past half century, we have continued our research on the human body and endeavored to find treatments for issues ranging from skin blemishes to hair woes, dark spots and wrinkles.

“Dreams for women, confidence for men.”

Our mission has remained steadfast ever since our founding.

Our consistently high aims and advanced technology, backed by the support of professional beauticians, have allowed us to remain a favorite brand throughout an era of rapid change.

“Our aim is to reach people. We want to help solve your problems. With that goal in mind, we constantly strive to create the highest quality products. Nothing is impossible.” (Noboru Tsurubayashi, Honorary Chairman)

OUR AIM IS TO REACH AS MANY PEOPLE AS POSSIBLE

We create hair care products under the brand name Pamyrol and skin care products under the name Slon, producing the products ourselves and supplying them to salons and stylists across Japan. We take pride in our carefully crafted beauty products, using ingredients formulated to make your skin feel its best and taking advantage of scientific knowledge to revitalize your skin from the inside out. Our products have long been popular in Japan and are highly recommended by professionals in the beauty industry. We hope to introduce our products worldwide and help as many people as possible feel great about themselves. They say seeing is believing, and we are confident that when you try our products for yourself, you will see your skin revitalized.

*The secret of beautiful
hair lies in a clean
and healthy scalp*

Preserving Ancient Japanese Culture — Forging New Conceptions of Beauty



*“We carefully select high quality
natural ingredients,
using our own specially developed
techniques to extract each component into
a well-balanced formula.”*

Noboru Tsurubayashi , *Founder & Honorary Chairman*

UTILIZING LIFE SCIENCE: THE POWER OF FORMULA, METABOLISM AND OSMOSIS

We carefully select high quality natural ingredients, using our own specially developed techniques to extract each component into a well-balanced formula.

The luxurious sensation that you get when you apply this unique formula to your skin energizes your metabolism and sets in motion the process of osmosis. As the formula is absorbed into your skin, it works in harmony with your body's natural energy to revitalize your skin and open the door to a natural, radiant beauty.

The three factors of formula, metabolism, and osmosis work together with nature's life force to affect your cells and nerves, producing a unique effect that cannot be replicated.



PAMYROL

SINCE 1967

Beautiful hair starts with a healthy scalp

*Just as a huge tree with lush green leaves grows exuberantly on a fertile land,
beautiful hair will only grow from a healthy scalp.*

Pamyrol supplements your hair care routine with pre-shampoo scalp care.

*Focusing on the metabolism of the scalp,
Pamyrol not only keeps your current hair healthy,
but also nourishes your scalp that nurtures newly-grown hair,
making your future hair grow beautifully.*

Scalp Cells New Growth Regeneration Activation
– A vibrant and dynamic life force –

Formula ***Pamyrol's efficacy is the result of its well-balanced formula***

Pamyrol's merit is the effectiveness of its functions that cannot be achieved by any single ingredient. To ensure the best results for your skin, we commit ourselves to make continuous efforts such as creating an original blend of carefully selected finest natural ingredients and extracting each ingredient using our own specially developed techniques to make the most of its natural qualities. With this one-of-a-kind formula, carefully prescribed to provide you a luxurious sensation, we have delivered many outstanding achievements until today.

Osmosis ***Pamyrol's theory of absorption – "human skin has thinking ability"***

It is revealed in a study that human skin is able to "think". When applying this unique formula, the pleasant sensations on your skin transmit nerve signals to the brain, which then sends a message back to the skin, signaling it to "absorb" the active ingredients by mechanism of osmosis. This is the innovative theoretical approach of absorption behind Pamyrol's formula.

Metabolism ***Pamyrol's research and development theme is "metabolism"***

There are about sixty trillion cells in our body, of which three hundred million cells repeat its metabolic cycle every minute and regenerate as freshly-born cells. This is the sublime wonder of life that works in mysterious ways. By drawing out such revitalizing life force of nature in a reasonable manner without abusing it, Pamyrol has been striving relentlessly in accomplishing its ongoing mission of creating "natural beauty" that overcomes aging effects and environmental damages, cultivating "healthy, youthful skin" as well as developing highest quality products.

PAMYROL 3 Step Hair Care System

Wash your hair and scalp like you wash your face!
A skincare-like scalp care sensation

Step1 Hair Tonic

Massage to loosen your scalp and let it absorb



Directions

Use before shampooing

1. Before shampooing, gently press nozzle on dry scalp and apply a moderate amount over entire scalp.
2. Gently massage the serum into scalp using your palm while distributing it evenly and thoroughly.

*Use Hair Tonic on dry hair and scalp before shampooing for allowing the serum to be absorbed effectively into your scalp.

*We recommend applying Acqua Verde Multiple Water prior to the hair tonic for better results.

Step2 Shampoo

Wash hair without stripping away its moisture



Directions

1. In the same method as the hair tonic, apply shampoo directly on scalp without wetting the hair.
* For Superior and Reaset Shampoo, wet hair before applying shampoo.
2. Focus on cleansing the scalp.
3. Rinse it off thoroughly.

*The more you repeat the shampooing process, the foamier it will get. Besides, first-time users are recommended to shampoo twice.

Step3 Treatment/Conditioner

Condition your scalp and make your hair more manageable



Directions

1. Take a moderate amount of conditioner/treatment, then apply it evenly over entire scalp and hair.
* You may adjust the usage amount – a small amount of usage keeps your hair smooth whereas using more keeps it moisture-rich.
2. After use, rinse it off thoroughly.

- Removes excess sebum and residues of hair styling products from clogged hair follicles on the scalp
- Allows active ingredients to penetrate throughout the entire scalp



Healthy and beautiful hair grows from a healthy scalp



Enhances scalp & hair quality

1. Hair Tonic

Let's start cultivating a new habit of pre-shampooing!

Step one of Pamyrol hair care system – apply evenly on dry scalp prior to shampooing

- Draws out impurities such as sebum and residue from clogged hair follicles, making it easier to remove.
- Strengthens the functional capacity of the scalp as a whole and restores its metabolic balance.
- Soothes and relaxes a tired scalp caused by stress and irritants.



**Hair Tonic
Craicel**
250ml

***Satisfyingly... softly... swiftly
Awakens the rhythm of life...***

This serum softens a tight scalp and moisturizes it swiftly. It restores the natural rhythm of hair growth cycle, replenishes moisture and bounce to your hair as well as revives its natural resilience and radiance. Each use leaves you with soft, shiny and silky strands.



**Hair Tonic
Extract**
250ml

***A constant top-seller ever since its launch in 1967
A theory and technique that cannot be replicated***

With a unique penetrating effect, the botanical ingredients serve to strengthen your scalp. This serum restores scalp balance and supports its metabolism, resulting in the activation of hair growth cycle.



**Hair Tonic
Neo**
250ml

A light, natural bounce and volume

This Neo serum provides a rapid, actual effect of a naturally voluminous hair. It contains a well-balanced combination of highly-concentrated extracts as well as other beauty-enhancing ingredients that boost your hair's resilience, elasticity and hydration. It revitalizes your scalp from the inside out and gives your hair its true, natural shine.



**Hair Tonic
Explare**
250ml

Brings silky smoothness and suppleness to hair

It is an anti-aging serum that stimulates the roots of your hair. A variety of carefully selected botanical ingredients, such as substances with high anti-inflammatory and hydrating effects, are lavishly blended in a well-balanced formula. It also activates the roots of your hair and promotes a healthy hair growth cycle.

2.Shampoo

Achieves an ideal balance of “cleansing power” and “scalp protection”

Step two of Pamyrol hair care system – removes impurities while retaining the moisture

- Keeping in mind to minimize the burden of foaming agents that strip away the protective layer of sebum on scalp and hair, we take extra care in our ingredient lineup ranging from substance that reduces foaming agent to component that produces fine, gentle lather.
- Select a shampoo according to your hair type, scalp condition and hair styling preferences.
- Being so gentle on the skin that it can even be used as face and body wash, Pamyrol shampoo cleanses your hair thoroughly while providing the care your precious scalp needs.



**Shampoo
Superior**
500ml

***For all hair and scalp types Boosts resilience and bounce
Glossy shine and light, natural-looking volume***

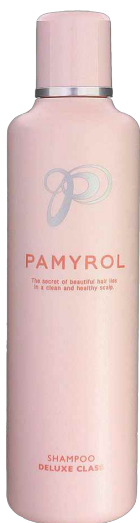
Using our own specially developed new techniques to mix botanical ingredients into the perfect formula, this shampoo keeps an ideal balance between the effectiveness and sensation it brings to your hair and scalp. It forms fine, mild lather that gently envelops hair and scalp damaged by hair coloring or perms.



**Reaset
Shampoo**
300ml

***Resets hair to its natural state
Airy and supple hair***

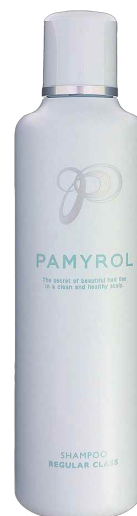
It removes dirt from follicles without hurting your hair while mild foam draws out impurities from scalp. It gives your hair a glossy sheen and light, natural feeling after washing.



**Shampoo
Deluxe Class**
500ml

***For damaged or hard hair type
Makes hair supple and manageable***

It makes your hair feel moist in a natural way and tangle-free after washing. This shampoo's feature is its ability to help coarse hair feel supple and smooth. It delivers an optimal balance of silky-smooth texture and weightless volume.



**Shampoo
Regular Class**
500ml

***For normal or soft hair type
Provides natural volume and elasticity***

This shampoo leaves behind a natural shine and smoothness. You will feel it breathe new life into your hair and scalp. It adds firmness and manageability to soft hair.

3. Treatment & Conditioner

Hair Protection + Scalp Care, Enhances hair condition

Step three of Pamyrol hair care system – a conditioner that is gentle on the hair and scalp.

- Aiming to replenish the protective oil barrier washed away by the shampoo, Pamyrol conditioner is an original formula that can also be used on the scalp.
- With a scalp care treatment inspired by skin care that mainly uses all-natural botanical ingredients, Pamyrol conditioner restores moisture and protects both your scalp as well as hair.



Acqua Verde Treatment
200g

Infuses nutrients such as protein ingredients deep into the hair, bringing you a healthy hair that is not easily damaged

It gives a supple, shiny, light and bouncy finish.
It is also effective in maintaining the beauty of your hair color and perms.



Treatment Soft & Smooth
200g

Bouncy, manageable hair with a sleek polish

This rich and thick cream quickly penetrates into your hair that tangles after shampooing.
It smoothens your hair and leaves it with fluffy volume.
It also makes styling easier for people with frizzy hair.



Conditioner Moist & Airily
200ml

*For a light, smooth finish
Airy and silky hair*

As this conditioner provides and maintains moisture, the natural luster and light, smooth texture it gives your hair right after washing will last all day long.



Conditioner Emollient & Smooth
200ml

*Soft, moist type
Silky-smooth and manageable hair*

It gives your puffy, voluminous hair a luscious, non-greasy finish.

Other Products



**Acqua Verde
Multiple Water**
200ml

Gives your hair and skin a natural moist, glossy texture

It boosts skin hydration, preventing itchiness or odor caused by dry skin.
It also enhances the effect of hair tonic.

Directions

- Prior to using hair tonic
- During blow-drying
- Immediately after face-washing
- Apply to body after shower



**Styling
Emulsion**
200ml

Style to your liking with this hair-smoothing, non-greasy product containing all-natural botanical ingredients

Show off nuances of your hair styles with a moderate hold according to different hair arrangements.
It protects your hair from damages of heat styling and locks in moisture into the hair from root to tip.

Directions

Place a moderate amount onto your palm, and rub both hands together to spread it evenly before applying it to your hair.

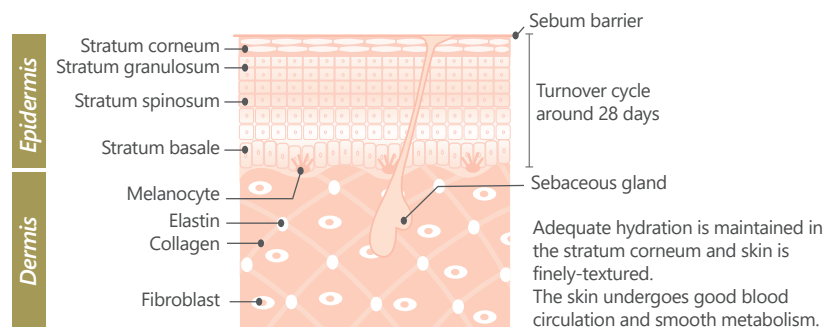


Renewed and revitalized bare skin

*Focusing on the skin's metabolism,
Slon brings out and enhances the skin's natural capacity to heal itself.
The moment the skin feels the pleasant sensation,
the skin's self-renewal processes begin and its life force is awakened,
making it beautifully renewed and revitalized.*

For healthy and beautiful skin

*Slon's skin care products treat your skin with care
without disrupting and defying its natural processes.*



**Keratin
Cultivation**

**Moisture-Retention
Capacity
Cultivation**

Slon's emphasis is not to peel or dissolve keratin that builds up on the surface layer (stratum corneum) of the skin, but to preserve and nurture it. Keratin is a structural protein that functions as a protective skin barrier and retains moisture in the skin.

Maintaining keratin structure in good condition gives your skin an impressively smooth, fine-grained texture. Therefore, we have developed an extensive lineup of beauty-enhancing products that condition and strengthen the keratin, including face wash that thoroughly cleanses your skin while protecting the keratin.

With our daily skin care regimen, you will find your bare skin revitalized for a renewed softness and suppleness.

Slon's goal of achieving true moisture retention of the skin is to stimulate the skin's ability to produce water-based hydration as well as to bring out and enhance its natural moisture-retention capacity. That is, providing and maintaining skin hydration is not Slon's only goal.

Besides, the factors that support the cultivation of the skin's moisture-retention capacity are the ingredients and penetrating power. With that in mind, carefully selected ingredients are blended into the formula using our own specially developed techniques.

Moreover, Slon's distinctive feature is the astonishingly high penetrating power in all the products. Thus, the skin's true moisture-retention capacity is fostered deep beneath the skin's surface.

***Enhances the skin's self-renewal ability through keratin cultivation
and moisture-retention capacity cultivation***

Face Wash ☀️🌙

Pre-wash lotion + Emulsifying wash lotion = Moisturizing face wash used in combination

Pre-wash lotion



Skin Essence
for Smooth Skin
145ml

A new habit of face-washing

A pre-wash lotion used before washing your face.
It loosens the keratin, making your skin soft and clear.
With a unique penetrating power, it softens and draws out makeup and impurities from your pores.



Makeup remover/face wash



Cleansing & Washing Lotion
for Fresh Skin
145ml

Get soft beautiful bare skin with this emulsifying wash lotion

A lotion-type face cleanser that does not create foam. It removes makeup and cleanses the face simultaneously through an emulsification process. (Emulsification is essential in removing both water-soluble and fat-soluble impurities all at once) As it is not harsh for the skin, it is also suitable for those with sensitive skin.

Directions



**Skin Essence/
Cleansing & Washing Lotion**

1. Pump a moderate amount of Skin Essence on dry palm, then dot it onto five areas of your face (forehead, nose, chin and each of the cheeks).

Usage amount

Approx. 2 to 3 cm diameter circle (3 to 4 pumps)



2. Use your finger to smooth it over your face, starting from the center and gently stroking outwards.



3. Leave it on for 5 minutes.
For areas of point makeup (eye, lip and cheek makeup) as well as the base of your nose wings, massage it in using gentle circular motions.

4. Pump a moderate amount of Cleansing & Washing Lotion onto dry palm, then dot it onto five areas of your face (forehead, nose, chin and each of the cheeks).
* Without rinsing off the Skin Essence applied earlier, apply a thin layer of Cleansing & Washing Lotion over it (layering).

Usage amount

Approx. 2 to 3 cm diameter circle (3 to 4 pumps)



5. Use your finger to smooth the Cleansing & Washing Lotion over face and work outwards from the center using circular motions.
Massage it in gently while blending it with the Skin Essence applied earlier.



6. Wet one hand with lukewarm water and rub both hands together to spread the water evenly in your palms. With your wet palms, gently massage it in using circular motions to let it emulsify. Do not rub your skin.
* Repeat this step 3 times.

7. After it is emulsified well, rinse it off thoroughly with lukewarm water.
* Gently pat your skin dry with a towel.

Face Mask 🌙

Feel the effect with just one use! Boosts skin hydration & vitality

Nutritive & Skin-Conditioning Face Mask



Conditioning Face Mask
for Fine Skin
100g

For everlasting fresh and vibrant bare skin

A quick five-minute wash-off gel mask. It diffuses moisture deep into the skin. Enriched with vitamin-boosting botanical extracts, it enhances the functional capacity of the skin and leaves you with soft, finely-textured bare skin. You will feel your skin activated and revitalized dynamically after using it once.

Directions



Usage amount

Apply an even layer of mask onto your face until your skin is covered entirely.

1. After washing your face, pat your hands and face dry with a towel before smoothing the mask over your skin.
2. Leave it on for 5 minutes and gently rinse it off with lukewarm water. (Do not wipe your face)
3. Gently pat your skin dry with a soft towel.
4. After use, follow up with your usual skin care routine such as face toner and lotion.

Face Toner

Get a true hydrating feel not just on the surface, but also from the inside of your skin.

Ageless Skincare Toner



Skin Lotion Fairis

for Beauty & Bright Skin

200ml

Reinforced with all-natural highly-saturated vitamins to restore an ageless look to your skin

A powerful approach to treating signs of aging such as dull skin, age spot, wrinkle and sagging.

A premium grade ageless skin care that delivers firmness and tightness to your bare skin.

By boosting skin hydration and vitality, it gives you clear, porcelain skin that exudes the most radiant glow from within.

Aging Care Toner



Skin Lotion Lucent

for Clear & Bright Skin

200ml

For smooth, brighter skin

With an array of hydrating ingredients blended in a well-balanced formula, this toner produces an excellent moisturizing effect.

It brings you clear and glowing skin brimming with youthful freshness. It also plumps up your skin and tightens your pores for a fine-grained texture.

Sensitive Skin Toner



Herbal Lotion

for Sensitive Skin

200ml

Preserves the health and hydration of unruly skin

This toner is packed with a lavish blend of carefully selected herbal extracts. It gently protects sensitive skin by achieving an ideal balance between the enhanced moisture-retention capacity and the mild feeling it brings to your skin.

It gives you a smooth skin texture while keeping your skin moist and hydrated from the inside out with long-lasting effects.

Moisturizing Toner



Moisture Lotion

for Soft & Lively Skin

200ml

Boosts the hydrating effect! For moist and supple skin

This toner delivers moisture thoroughly even into the deepest layer of stratum corneum.

Not only does it provide your skin with adequate hydration, it also enhances the skin's moisture-retention capacity, leaving your skin feeling fresh, dewy, smooth and soft.

Directions

Usage amount

Approx. 2 to 3 cm diameter circle (3 to 4 pumps)



1. Apply toner to clean face after washing your face.
2. Place a moderate amount onto your palm and layer it over your entire face 3 to 4 times in the same method as applying hand mask.
3. To seal in the moisture effectively, press hands lightly against your face while letting it absorb thoroughly into your skin.

Face Serum

**Awakens the very life force of your skin!
Intensive aging care**

Collagen Serum



Refining Serum

for Lively Skin

30ml

**Enhances the skin's function
for firm and supple bare skin**

This serum is made up of carefully selected fine quality active ingredients such as natural collagen and hyaluronic acid that are broken down into smaller molecules using our own specially developed techniques and added abundantly into the formula. It penetrates deeply into your skin as well as delivers firmness and elasticity to the skin. It is also effective in treating dull skin, age spot, wrinkle and sagging.

Botanical Oil Serum



Comfort Serum

for Rejuvenated Skin

30ml

**Calms and relaxes tired skin
for soft, radiant skin**

This serum contains a well-balanced ratio of botanical oils that blend seamlessly and smoothly into your skin. High in its emollient effect, it leaves your skin feeling supple with a healthy glow and crystal-clear translucency. As it helps to balance oil production, not only is it suitable for those with oily skin, it can also be used during the day without any concern.

Directions

Usage amount

Take a moderate amount (for any of the serums)

Apply to your face after using face wash and toner.

* We recommend layering the serum onto areas of concern such as eye areas and smile lines.

* You may blend the two face serums and one of the face lotions (3 different products) together.

Face Lotion

**Seals moisture within the skin, promising
a long-lasting plump and supple texture!**

Ultra-Moisturizing Lotion



Moisture Emulsion

for Natural Skin

75ml

**For those who prioritize
a moist feel**

Soft and supple to the touch, this lotion plumps up and gently protects your skin. By absorbing into the stratum corneum quickly and enwrapping your skin with its hydrating shield, it enhances skin moisture to a greater degree.

Ultra-Emollient Lotion



Emollient Cream

for Sensitive Skin

75ml

**For those who prioritize a smooth,
gentle feel**

This lotion maintains moisture and refines skin texture, leaving your skin feeling soft and smooth. As it is less harsh or irritating for the skin, it can also be used on those with sensitive skin without any concern. It is also suitable for those with oily, delicate or unruly skin.

Directions

Usage amount

Take a moderate amount (for any of the lotions)

1. Apply to your face after using face wash, toner and serum.
2. Take a moderate amount and dot it onto five areas of your face (forehead, nose, chin and each of the cheeks). Then, gently smooth it over the entire face.
3. In the same method as applying hand mask, press hands lightly against your face to let it absorb.

* You may blend the two face serums and one of the face lotions (3 different products) together.

* Can also be used as makeup base.

Face Cream

Restores turnover and leaves skin full of vitality

Ageless Care Cream



Skin Cream Elf
for Beauty & Bright Skin
30g

For ageless skin brimming with youthful radiance and translucency

Enriched with all-natural highly-concentrated vitamins, this cream applies a powerful approach to treating signs of aging such as dull skin, age spot, wrinkle and sagging. This luxurious and enriching cream enwraps your skin with a thick and rich texture.

It activates your skin's natural regeneration while you sleep at night, helping you wake up to a noticeably firmer, brighter and clearer complexion in the morning. It also locks in skin hydration and protects your skin with enhanced moisture-retention effect.

Aging Care Cream



Skin Cream Luster
for Soft & Silky Skin
30g

For bright, glowing skin brimming with crystal-clear translucency

32 types of beauty-enhancing ingredients, rich in botanical extracts, are lavishly blended in this essence cream.

As the final step in your skin care routine, it thoroughly seals hydration and beauty-enhancing ingredients into your skin, working wonders for your skin while you get your beauty sleep at night.

Every single skin cell is revitalized overnight, giving your skin a radiant glow and firm texture the next morning.

Moisturizing Cream



Moisture Cream
for Tender Skin
30g

For radiant and moisture-rich skin

This product is Slon's top-selling cream. With excellent hydrating and penetrating effect, specially selected moisturizing ingredients fully absorb into the deepest layer of your skin.

It is also highly recommended for those who avoid using cream due to concerns such as acne or inner dry skin.

Directions

Usage amount

Use according to your preferred amount (a pearl-sized amount as an indicator).

1. Apply to your face after using face wash, toner and serum.
2. Dot it onto five areas of your face (forehead, nose, chin and each of the cheeks). Then, gently smooth it over the entire face.
3. Be careful not to rub or massage your skin.

* The cream turns white after it is lightly smoothed over skin, so just leave it on. Soon, it will naturally absorb into your skin and reveals a soft, supple finish.

Body Care

Blends seamlessly into the skin and lightly glides along it, bringing you silky-smooth bare skin

Ultra-Moisturizing Body Shampoo



Body Shampoo

for Fresh Skin

200ml

Keeps skin moist and hydrated with gentle foam that absorbs well into the skin

A body care shampoo that cleanses and maintains skin hydration. Enveloping you in a soothing white rose scented fragrance, the gentle foam absorbs easily into your skin and leaves behind a moist, silky touch after washing.

Directions

Body Shampoo

1. Wet your skin, then apply a moderate amount over your entire body and gently cleanse it.
2. After cleansing, rinse it off thoroughly.

* It may also be used on the face.

Body Milk

Take a moderate amount and gently smooth it over your entire body.

* It may also be used on the face.

Ultra-Moisturizing Body Milk



Body Milk

for Moisture Skin

200ml

Get smooth bare skin with this first-class body milk

A first-class body milk that melts and absorbs effortlessly into your skin. It produces an emollient effect to give you finely-textured and smooth bare skin. It relaxes you with a faint lingering scent of white roses and enwraps your skin with its moisture-rich veil to give you a bare skin beauty that exudes natural silkiness.



Corporate Information

Company Name

Pamyrol Company, Limited

Head Office

4258-1 Yaho, Kunitachi-shi

Tokyo 186-0011, Japan

Tel +81-42-571-1111

Fax +81-42-571-0114

Founded 1967

Incorporated 2003

Representative Director, President

Hirohisa Tsurubayashi

Website www.pamyrol.co.jp